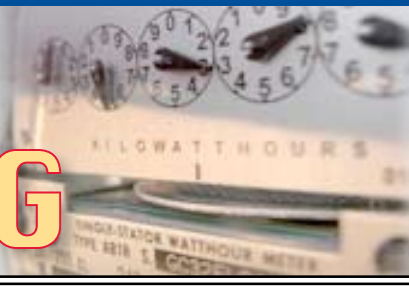




# WATT'S HAPPENING

SUMMER 2009



307 Suburban Avenue, Deer Park, New York 11729 | tel 631.242.8080 | fax 631.242.6392 | www.rolandselectric.com

## Message from the President

As the summer season quickly comes to an end I hope that you have all enjoyed your summer and were able to take some time off for a relaxing vacation with your family or friends.

It was a very busy summer for Roland's Electric with over fifty active projects running and manpower reaching close to one hundred total electricians. I want to thank all of you

that helped us meet our schedules to get the work completed on time but especially our project management, purchasing and warehouse teams who were able to coordinate all the manpower, material, equipment and tools needed to make it all run as smoothly as possible. It was a job well done.



Steve Cadieux  
President

I also want to thank everyone who helped organize

the Roland Cadieux Memorial Golf Outing. With the help of many in the Roland's Electric Family we were able to get raffle prize donations from over 75 local shops and restaurants. And thanks to all of our employees, friends, vendors and fellow contractors who donated raffle prizes, sponsored holes, beer carts, played golf or came to the dinner, with all your support it made the day a great success and allowed us to raise \$20,000.00 dollars worth of food and cash donations for the Long Island Cares Harry Chapin Food Bank that supplies food to feed people in need right here on Long Island.

When we dropped off the two truck loads of food to the Long Island Cares warehouse in Hauppauge, they took us for a tour of their facility; we were surprised how empty the warehouse shelves were. They told us that due to the bad economic times and high unemployment the request for food from local food pantries was at an all time high and donations to the food bank were down considerably. It made us all feel very proud that we were able to help support local families here on Long Island where we all live and work.

We look forward to doing it again next year and will keep you advised of future fund raisers to help our fellow Long Islanders.

## Project focus



### VA HOSPITAL

East Northport

Foreman: Don Flareau

Project Scope: Replacement of Existing Lighting Fixtures and New Power to Fan Coil Units in All Resident Bedrooms



### FOREVER 21 GREEN ACRES MALL

Valley Stream

Foreman: Mike Schomber

Project Scope: New Retail Store



### 1111 MARCUS AVENUE

Lake Success

Foreman: A J Cordero

Project Scope: Installation of 450 kW Generator on Rooftop



**EASTPORT SOUTH MANOR HIGH SCHOOL**

Manorville

Foreman:

Bob Blaney

Project Scope:

Sports Lighting



**LONGWOOD HIGH SCHOOL**

Middle Island

Foreman: Bruce Horner

Project Scope:

Installation of Emergency Standby Generator and Distribution Panels



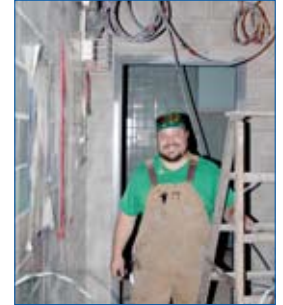
**TOWN OF OYSTER BAY HALFWAY HOUSE**

Woodbury

Foreman: Donal Morrissey

Project Scope:

New Construction to include Service, Power, Lighting and Fire Alarm



**WACHOVIA BANK**

Lake Ronkonkoma

Foreman: Mike Vitale

Project Scope:

Construction of New Bank Building

**HICKSVILLE MIDDLE SCHOOL**

Hicksville

Foreman: Don Flareau

Project Scope:

Renovation of Auditorium and Bathrooms



**COMPLETED PROJECTS**

- Forever 21, Green Acres Mall
- Dealer Track
- Eastport South Manor High School, Sports Lighting
- Longwood High School, Emergency Generator
- Island Surgical, Bay Shore
- CW Post Animal Lab
- CW Post, Sprinkler Project
- CW Post, Kings and Suffolk Hall, Fire Alarm
- Hicksville Middle School
- Delia's, Smithhaven Mall
- Westbury UFSD, Fire Alarm Upgrade
- Wachovia Bank, Ronkonkoma
- CW Post Humanities Hall

**UPCOMING PROJECTS**

- OB Moderization NSUH
- Lawrence Schools
- King Kullen, Glen Cove
- P.C. Richard & Son, Patchogue
- Roosevelt Schools
- HSBC Bank, Manhasset
- Stony Brook University, Life Science Building
- WT Clarke High School
- Stony Brook Schombell Dorms, Fire Alarm Upgrade

**ONGOING PROJECTS**

- Pall Corporation
- CW Post, Chiller
- Michael Tully Park
- Island Trees Schools, Fire Alarm Upgrades
- Island Trees High School, Sports Lighting
- VA Hospital
- SUNY Farmindale, Nathan Hale Hall
- Massapequa Schools, Elevator Additions
- Rock Point High School, Service Upgrade
- Town of Oyster Bay, Halfway House

**Technology Path**

By Robert Bielawski



**DIGITAL MATERIAL PRICING**

The majority of electrical contractors depend on pricing resources for current material costs. With several options available, these resources provide accurate material costs to be competitive in today's construction market. Technology has changed the way we currently obtain pricing. The advancements in computer data basing has simplified the process of updating

material pricing.

In the past we subscribed to a material pricing service which provided paper pricing documents via the postman. As material pricing changed we would receive updated sheets and had to replace the older pricing sheets with the newer sheets. Our entire staff had to use a single binder in one office that housed the material pricing sheets to look up the price of an item.

Currently we subscribed to a material pricing service that provides a single digital database containing all of the electrical material we purchase and install. The digital database is located on a server which allows our staff to use their own computer to check the current cost of any item. Additionally the database includes the option to download file specifications and to view the actual item.

With the cost of material changing every day the material pricing service releases updates via the internet and then automatically updates the digital database on the server. This technology provides the entire staff with the most current material pricing.

## Employee Spotlight

**THERESA SHELBY**

**16 Years**

*Accounts Payable  
Manager*



Theresa Shelby joined Roland's Electric, Inc. in January of 1993. She started as a receptionist, and also helped the Accounts Payable Department with purchase order data entry, invoice preparation, and filing. By 1996 she was promoted to Accounts Payable Manager.

As Accounts Payable Manager, some of her responsibilities include processing vendor invoices and expenses for payment, cash disbursements, reconciling vendor accounts, maintaining purchase and disbursement journals, and providing tax exempt certificates for tax exempt projects.

Theresa enjoys spending summer weekends in Montauk with family and friends at the beach and barbecuing. "I enjoy our Happy Hour tradition with Pomegranate/Cranberry Martini's being served up at 4:00! The Pina Colada's and Margarita's aren't bad either", says Theresa.

She also enjoys photography, gardening, writing poetry, going to art galleries, watching classic movies, and going to Jones Beach Theatre for summer concerts.

"Everyone at Roland's Electric, Inc. has been so nice. You couldn't ask for nicer bosses or co-workers. I'm proud to be part of the Roland's family", said Theresa.

## RESOURCE MANAGEMENT

Keeping track of tools, equipment and materials can be a daunting challenge. The idea of spending valuable time searching for them is not appealing, and also means unnecessarily losing time and money as a result of delays and lost productivity.

In order to maximize tool, equipment and materials utilization and improve productivity by ensuring the right tools, equipment, and materials are in the right place when they are needed please make sure that they are returned to the shop once you are done with them.

Do not leave them at the jobsite or in your vehicle!

### QUICK FACTS BOX

- ▶ The top jobsite issues are theft, safety, productivity, lost time and replacement costs. (DeWalt Tools)
- ▶ The percentage of tools lost to hoarding is commonly the same amount lost to shrinkage.
- ▶ Tool and storeroom personnel often spend up to 1.5 hours a day looking for misplaced tools.
- ▶ The National Insurance Crime Bureau estimates that the construction industry loses \$1 billion annually from equipment and tool theft.

## SAFETY

### Personal Protection Equipment and Knowledge Saves Lives

Whenever you enter a jobsite you should always ask yourself:

Am I wearing my hardhat, safety glasses, hearing protection, appropriate clothing, and safety shoes or boots?

Do I know what the potential hazards are and how to recognize them?

Should I re-assess the potential hazards as I enter different areas or situations on this jobsite?

Where is the nearest first aid kit, fire extinguisher, and telephone?

## Bob M's Code Corner



*E-mail the correct answer with NEC section number to [rmauchan@rolandselectric.com](mailto:rmauchan@rolandselectric.com) and be eligible for the Code Q & A raffle. Raffle winner will be announced in the next issue.*

**Q. What is the VA rating of 25 linear ft. of lighting track?**

**A. Section 220.43(B).** 1875 VA (150 VA per 2 linear ft.)

**Q. What is the minimum length of a ground rod?**

**A. Section 250.52(A)(5).** 8 ft.

**Q. Is a equipment bonding jumper permitted to be installed on the outside of a raceway or enclosure?**

**A. Section 250.102(E).** Yes, the length should not exceed 6 ft.

### SUMMER CODE QUESTION

**A vertical run of 4 in. rigid conduit is installed to a height of 250 ft. The conduit contains 4 - 500 MCM conductors. How many conductor supports are required?**

Thank you to every person who submitted an entry for the Spring Q & A Code Raffle Contest. There was no winner.

### SPRING CODE QUESTION ANSWER

#8 XHHW = 50 AMPS

50 AMPS X 80% (6 Conductors in a Raceway) = 40 AMPS

40 AMPS x .82 (Correction Factor at 45° Celsius) = **32.8 AMPS - The Correct Answer!**

## 10th Annual Roland's Electric Fishing Trip



It's the time of year again when the Roland's Electric crew descends on the Great South Bay at Captree Boat Basin somewhere out in the Atlantic Ocean. The rain date was Thursday, June 25th, the weather was good, and the boat that kept the crew afloat was the Capt. Eddie B III.

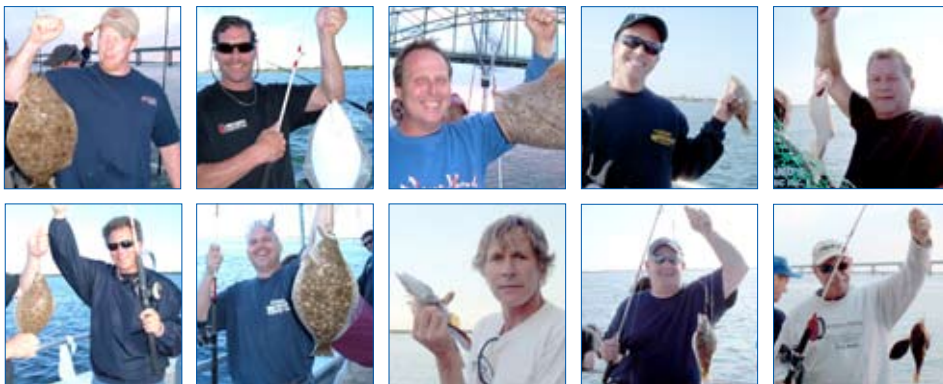
You never know what kind of unusual fish might bite your bait. Some think this fish, left, looks like a friendly, cheerful face, except the round things that look like eyes are not eyes at all. They are its nostrils at the end of its extremely long, acutely pointed snout. Yep, it's really ugly. Nope, it's not good to eat. No, it doesn't have a stinger in its tail and I wouldn't recommend messing with it because it looks like it would put up a good fight.

FOR MORE PHOTOS VISIT [rolandselectric.com](http://rolandselectric.com)

All who attended enjoyed the fishing, food, and drinks.



Dan Superdock, left, caught the most fish; Jay Testa, center, caught the smallest fish; and Pete Kuzmiak, right, caught the largest fish.



## UPCOMING EVENTS

This fall there will be a foreman meeting. Exact date to be determined.



**Mark Your Calendar**  
The Monday Night Football BBQ will be held October 12th!

## First Time Fundraiser Proves A Winner Despite Tough Economic Times

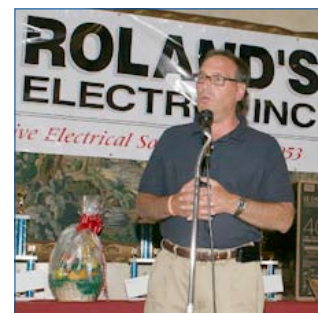
The Roland Cadieux Memorial Golf Outing fundraiser to benefit Long Island Cares, Inc. – The Harry Chapin Food Bank was a huge success. It took place on Tuesday, July 28 at Stonebridge Golf Links & Country Club. Despite tough economic times \$20,000 in food donations and cash was raised from this first time fundraising event.

“We're very grateful to Roland's Electric, Inc. for their support of Long Island Cares which delivers food to the more than 540 community based pantries, soup kitchens, day care centers and other programs that rely on support from Long Island Cares to feed the over 260,000 children, adults and families on Long Island affected by hunger and malnutrition,” said Paule T. Pachter, Executive Director of Long Island Cares, Inc.

In collaboration with Joseph Brown of King Kullen Grocery Company, Inc. Roland's Electric was able to stretch its generous cash donations by receiving a discount to purchase additional food needed so Long Island Cares can provide nutritionally balanced boxes to Long Island families who utilize Long Island Cares' network of food pantries.

In addition to the 343 lbs. of food collected at the event Roland's Electric, Inc. unloaded approximately \$17,500 worth of food off its trucks on Tuesday, August 24.

Thank you Roland's Electric sponsors, donors, golfers, and volunteers. A big thanks to the Roland' Electric Golf Committee members Stephen and Geri Cadieux, Robert and Ann Mauchan, Lisa Kilthau, Robert and Donna Bielawski, Joseph and Laurin Clark, Linda Paino, Keri Hespeler, and Jennifer Connolly. Roland's Electric, Inc. donated not only time, but all the supplies and associated costs to help out.



Paule T. Pachter, Executive Director of LI Cares, Inc.

FOR MORE PHOTOS VISIT [www.rolandselectric.com](http://www.rolandselectric.com)

## New Addition to Roland's Family



On August 19th at 9:22 pm Jennifer and Ryan Connolly were blessed with their first child, a healthy 7 lb. 6-oz. baby girl, 20 1/4 inches long named Alexandra Lauren Connolly.

## Milestone Birthday

Retired Roland's employee Al Keller, inset, enjoys his surprise 75th birthday party celebration given by his wife Ann and daughter Joyce.

