



WATT'S HAPPENING

SPRING 2009



307 Suburban Avenue, Deer Park, New York 11729 | tel 631.242.8080 | fax 631.242.6392 | www.rolandselectric.com

Message from the President

Recently, I attended a seminar hosted by Local 25 called "Realities of the Current and Future Electrical Markets on Long Island". It focused on our market share of the electrical work being done by union electrical contractors on Long Island. It was eye-opening, to say the least. The total work being done by union labor, including all markets (private, public and residential), is only 34%. Worse yet, there are five "IBEW" unions on Long Island sharing this small percentage. The actual percentage of work done by Local 25 is unknown but, in any case, this situation is not good and taking away the public work projects makes it even worse.



Steve Cadieux
President

At least 50% of the bid requests we receive from general contractors on private work such as restaurants, office buildings, hospitals, and retail stores are requesting non-union labor pricing. Even with job target assistance from Local 25, which helps us to be somewhat competitive with our pricing, we still cannot usually meet the non-union pricing. Some of these general contractors don't want to use union contractors - period. With the economy being what it is, owners want the lowest possible pricing and don't care if the work goes to a union contractor or a non-union one, as long as it's the cheapest price. It used to be that only union contractors were able to do the "big

jobs", but now our non-union competitors are getting bigger and more advanced and are now doing multi-million dollar projects and providing quality workmanship.

What can be done to regain our market share without wage and benefit cut-backs? We must increase our productivity and reduce our job site costs. Our foremen and project managers play a major role in what can be done - but we all have to do our part:

- Review the drawings and lay the work out in the most cost effective way with out sacrificing the quality we are known for.
- Review the material required with the project manager and give the purchasing department enough time to properly buy the material at the best price without having to rush it out the next day.
- Utilize manpower correctly; use apprentices for non-technical work such as installing fixtures, pulling cable and wire, and as a second person installing conduit instead of two journeymen.
- Limit breaks to the allotted time and make sure everyone starts and ends the workday at the proper times.
- Use an assembly line approach for repetitive tasks, such as fixture assembly, in order to reduce overall man hours.
- Local 25 must provide us with the proper amount of apprentices and/or reduced wage workers which will enable us to be more competitive and win more projects by bringing our rates down.
- Get involved at the union hall, let your voice be heard, they could use your help in many ways.

To close on a positive note- we have secured many new projects and will be hiring some additional electricians for the summer work load. Keep up the good work and enjoy your summer.

Project focus



dElia*s

Roosevelt Field Mall Garden City

Foreman: Eric Hubschmitt

Project Scope: Construction of New Retail Store

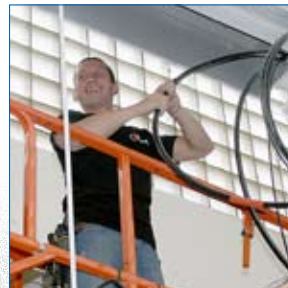


POLL IX

Greenvale

Foreman: Jason Testa

Project Scope: New Construction of Restaurant



DEALER TRACK

Lake Success

Foreman: AJ Cordero

Project Scope: Data Room Renovation and New Emergency Generator

**SENATOR
MICHAEL J. TULLY
PARK**

New Hyde Park
Foreman: George Portela
Project Scope: Renovation of Pool and Offices



**PERRY B. DUREYA JR.
STATE OFFICE
BUILDING**

Hauppauge
Foreman: Don Flareau
Project Scope: Repair and install new parking lot ballasts, lamps and poles.

SOUTH HUNTINGTON WATER DISTRICT

South Huntington
Foreman: Tiago Dacunha
Project Scope: 2 floor, 2 bay building that will house an engine and an ambulance.



EAST NORTHPORT FIRE DISTRICT

East Northport
Foreman: Bob Taborsky
Project Scope: New Fire Substation on Clay Pitts Road.

COMPLETED PROJECTS

- C.W. Post Mary Lai Building
- Manhasset School Bathroom Renovation
- Delias Roosevelt Field Mall
- Kensington Pool Bathroom Renovation
- Michael Kohrs Walt Whitman Mall
- Citarellas Bridgehampton
- Longwood High School Emergency Generator
- New York Sports Club Deer Park
- Bioscript
- Hoegh Autoliner
- Spring Store Roosevelt Field Mall

UPCOMING PROJECTS

- Town of Babylon Energy Upgrade
- Town of Oyster Bay Halfway House
- King Kullen #52
- South Country Schools
- Northwood
- Miller Place Schools
- Massapequa Schools
- Hicksville Schools
- Island Trees Schools
- C.W. Post Humanities Hall
- HIP Cardiac Wellness Center
- Northport VA Hospital
- Westbury Schools
- SUNY Farmingdale Nathan Hall
- Stony Brook University Life Science Building

ONGOING PROJECTS

- C.W. Post Sprinkler Upgrade
- C.W. Post Kings Hall and Suffolk Hall Fire Alarm
- Medelson Dorms Fire Alarm Stony Brook
- SUNY Farmingdale Tennis Court Lighting
- Forever 21 Green Acres Mall
- Delias Smithaven Mall
- C.W. Post Chiller Replacement
- Wachovia Bank Ronkonkoma
- Eastport South Manor Sports Lighting
- Norwood Estate Residence
- GAC Building South Huntington Water District
- Estee Lauder Fire Pump

56 YEARS AND STILL BURNING BRIGHTLY

Roland's Electric is excited to announce our most recent feature in the May/June issue of Building Long Island as we celebrate our 56th year anniversary. The publication provides insightful coverage and analyses of the leaders and trends that are shaping our industry.

In the article titled, "Still Burning Brightly: Roland's Electric Makes Customer Service and a Friendly Work" Environment Top Priorities, our staff and customers provide insights on what has led to the success of Roland's Electric and what keeps us on track for continued growth.

Technology Path

By Robert Bielawski



TECHNOLOGY UPGRADES AT ROLAND'S ELECTRIC

Roland's Electric recently upgraded its existing servers, network switches, and storage hardware. A server typically designates computer models intended for running software applications under the heavy demand of a network environment. This is typical to how our network operates.

Included with the new servers are the most up-to-date Microsoft Operating Systems and Security Software systems to increase performance and protection to the entire network.

One of the software applications we use is Microsoft Exchange, its features consist of electronic mail, calendaring, contacts/tasks and support for our mobile/web-based access to information. This new feature provides the option to synchronize our project managers e-mails, contacts and calendar to their Smartphone when out of the office.

With the increased use of e-mail we have stepped up our protection against virus, spam and nuisance e-mails using a high tech hardware device. The new storage hardware saves critical data which constantly changes everyday from each department.

These new upgrades will provide our network administrator the tools to manage and monitor the network more efficiently.

Employee Spotlight

GEORGE PORTELA
22 Years
Foreman



George Portela has been married 26 years to his wife Donna and they have two boys Matthew, age 12, and Dylan, age 10.

"I have been part of Roland's Electric for almost 23 years. In those years I have met a lot of people and have made a lot of friends, all of whom make up the Roland's family", said George.

During the year George doesn't get to see everyone that works for Roland's, so when the Annual Fishing Trip or the Christmas Party comes around he enjoys seeing everyone and playing catch up. By the way, George initiated the first Fishing Trip which has been an annual event since the summer of 2000.

George hates the winter and the cold weather. According to George below 70 degrees is cold. Hmm, that leaves out more than just the winter George. The average temperature is only above 70 on Long Island from June through September.

George enjoys being on his boat with family and friends in the summer, and playing horseshoes on the beach with a Budweiser in his hand. He claims many are jealous of his great legs in shorts. Perhaps Roland's should have a contest and see if this claim holds up. The only problem is this would be too much fun to pay much attention, and all the men would be declared winners.

"I really feel fortunate to be part of a great company made up of a lot of great people. See you on the water or in the trench", said George.

NEW TOOLS

TE 6-A CORDLESS ROTARY HAMMER DRILL

APPLICATIONS

- Rotary hammer drilling into concrete
- Drilling metal sheets; wood; drywall
- Driving screws



FEATURES AND BENEFITS

- 36 volt battery with deep discharge prevention
- Provides longer working time
- Optional belt adapter
- Allows for overhead use
- Electropneumatic hammering mechanism
- For peak performance
- Universal battery charger
- Accepts almost any Hilti Ni-Cad battery

SAFETY



REMINDER!

The use of cell phones is strictly prohibited on all projects.

If you have not completed the OSHA 10 course at the JATC please contact the office 631-242-8080.

Bob M's Code Corner



E-mail the correct answer with NEC section number to rmauchan@rolandselectric.com and be eligible for the Code Q & A raffle. Raffle winner will be announced in the next issue.

Q. Can a receptacle be installed above a suspended ceiling?

A. YES. Receptacles are permitted above a suspended ceiling but a flexible cord is not (400.8 (5)). Receptacles can be used above the ceiling for portable tools but not for cord-and-plug connected equipment fastened in place.

Q. Can a light fixture and its associated wiring be mounted to a tree?

A. YES. Trees can be used to support luminaires 410.36(G), but they must not be used to support overhead conducted spans (225.26).

SPRING CODE QUESTION

What is the ampacity of six (6) #8 XHHW current carrying conductors installed in a wet location at an ambient temperature of 45 degrees C?

CONGRATULATIONS!

Roland's Electric is pleased to announce Jeremiah Buckley as the winner of the Winter Q & A Code Raffle Contest.

Note: We had several correct and partially correct answers to the winter code question. Thank you to every person who submitted an entry.

WINTER CODE QUESTION ANSWER

The minimum clear distance of access in front of electrical equipment operating at 480v if the wall opposite the equipment is made of masonry construction is 3'6", table 110.26(A)(1) condition 2.

Taking the LEED in Green Building and Design



As sustainable buildings and green building techniques become more mainstream—and there's every indication that this will happen—LEED (Leadership in Energy and Environmental Design) will continue to have a significant impact on the design and construction industry.

Standards currently exist for several types of building projects, among them new construction, buildings undergoing renovation, commercial interiors, and on-campus facilities, and building shells or installation of building systems such as HVAC for future tenants. The USGBC (United States Green Building Council) is in the process of developing standards for schools, health care facilities, and new retail construction in the near future and no doubt will develop more in the years to come.

Keri Cadieux-Hespeler, Electrical Estimator, is the first LEED Accredited Professional in New Construction and Major Renovations with the USGBC at Roland's Electric and will help position us as an expert in this growing niche market.

Roland's Electric looks forward in its continued efforts to promote and provide a sustainable built community and working with clients that have the same sustainable views. Keri's industry expertise and certification will ensure that every green building project meets new levels of design, technology integration, and is a success. "When it comes to designing buildings that are energy efficient, we've only scratched the surface. I want to continue working with our customers and the design and construction communities so together we can achieve even greater sustainability," Keri said.

Keri will also work closely with our staff to solidify our position as electrical contractor of choice for the delivery of sustainable, cost effective electrical solutions which will help our customers find ways to save or make money in the Long Island region.

Information on LEED Accredited Professionals can be found at www.gbci.org and information regarding the USGBC can be found at www.usgbc.org.

Announcements



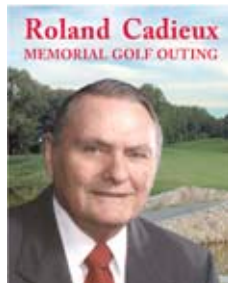
SUBMIT YOUR ANNOUNCEMENT
for inclusion in the next newsletter to
lpaino@rolandselectric.com.

MEMORIAL GOLF OUTING

Roland's Electric will be hosting a golf outing in memory of our founder Roland Cadieux. The event will take place at Stonebridge Golf Links & Country Club on Tuesday, July 28, 2009. 100% of the proceeds will be donated to Long Island Cares, Inc. - The Harry Chapin Food Bank.

If you wish to join in our efforts by playing golf, having cocktails and dinner, making a cash donation, or help with solicitations for donations towards raffles and prizes please contact Lisa Kiltbau, Robert Mauchan, Robert Bielawski, or Stephen Cadieux.

More details and online registration available at www.rolandselectric.com/RE_Memorial_Golf_Outng.pdf.



CONGRATULATIONS!

Wade S. Hubschmitt celebrates 25 years, George C. Edwards celebrates 30 years, and Thomas J. Mallin celebrates 35 years of membership in Local Union #25.

Jay Testa and his wife Lisa are expecting their first child in December.

Matt Rothmeier and his wife Chrissy are expecting their third child in September. They have two girls already and this new baby will be a boy!

Jen Connolly and her husband Ryan are expecting their first child in September.



BECAUSE YOU HAVE BETTER THINGS TO DO Coming Soon - The Convenient Way To Be Paid

Roland's Electric is implementing Direct Deposit for our payroll system. Within a few weeks, you will be able to deposit your payroll check directly into your checking or savings accounts, using one or multiple accounts. Look for the Direct Deposit Authorization Form to be distributed with your paycheck.

You may also complete the fillable form online at www.rolandselectric.com/directdeposit.pdf to sign up.



OFFICE GIRL'S DAY OUT



Critics weren't very enthusiastic about this revival of "Guys and Dolls" (the sixth Broadway version of the show), but the Roland's Office Girls enjoyed this stunning new revival on Wednesday, June 3rd. After the show, they enjoyed dinner at Arno Ristorante a few blocks from the theater, drank and laughed a whole lot.

Visit <http://www.rolandselectric.com/GirlsDay09.html> to view more photos.